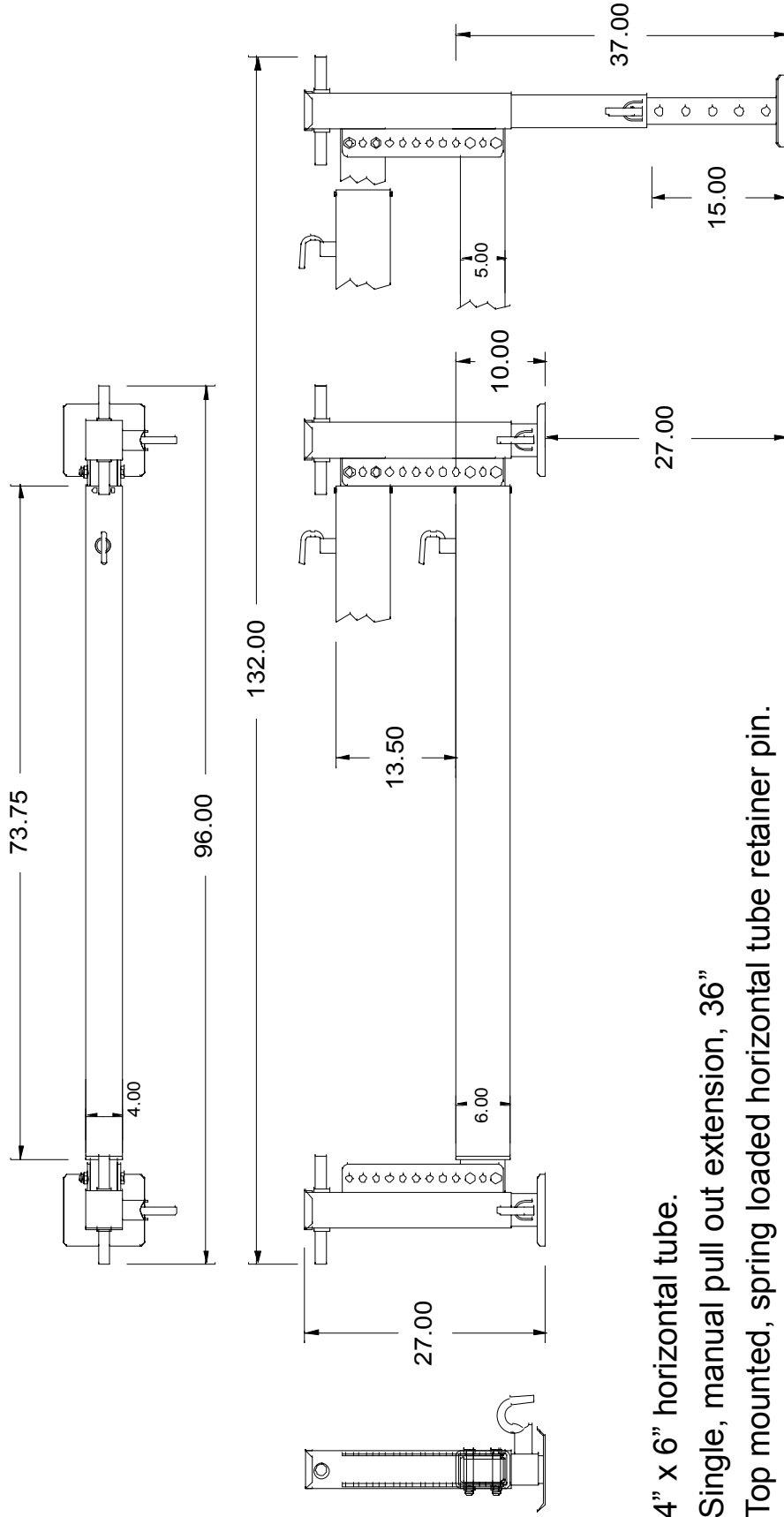


IDEAL CRANE HEAVY DUTY OUTRIGGER PN 900055

For use with cranes up to 6000# capacity on chassis up to 33,000 gvw.



- 4" x 6" horizontal tube.
- Single, manual pull out extension, 36"
- Top mounted, spring loaded horizontal tube retainer pin.
- Horizontal crank jacklegs; crank down = 12", drop = 15"
- Adjustable jack mounting height, range = 13-1/2"
- Spring retract drop leg with spring-loaded retainer pin.
- Landing pad dimension = 8" x 9-1/4" .
- Unit Weight = _____



... better by design ...